

U6

New Era for Scaling

Expert in comfortable scaling



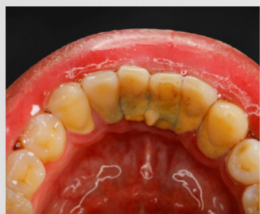
Scan with WeChat to
log in mini program



Comfortable scaling

The amplitude of tip is only 20–90 μm which will not hurt teeth and will bring patients comfortable experience during scaling treatment. Intelligent degenerative feedback will automatically adjust the power level.

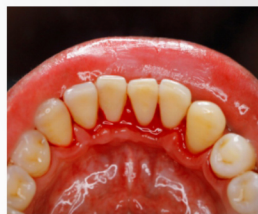
According to the surface state of different teeth such as soft and hard calculus, automatically output the correct power to the tip. Even when dealing with stubborn calculus, the scaling will be stable and continuous.



Before scaling



During scaling



After scaling





High quality handpiece

Aluminum alloy case enables it to be autoclaved at high temperature, and makes it not easy to crack or deform. Latest handpiece sealing technique brings durability.

Ergonomic design of handpiece endows comfortable hand feeling.

Smart touch system

Switch modes and adjust power level in control panel. Waterproof design; film, hands with gloves and water drop will not affect the use.

Powerful functions

U6 integrates the functions of supragingival scaling, subgingival scaling, implant maintenance, cavity preparation and endodontic treatment.



Root canal treatment

Endodontic irrigation



E60

E62

For removal of calcification and bad fillings in root canal



E3D

For removal of calcification at root canal orifice and top 1/3 of root canal



P4D

Root canal retreatment
Removal of foreign body



E6

For removal of foreign body at bottom 1/3 of root canal



E7

For removal of foreign body at top 1/3 of root canal

Special material (E6, E7)
Thin, flexible, good conductivity to ultrasound



E14

For removal of foreign body and instrument fractures (stainless steel) in root canal



E15

For removal of temporary cement and instrument fracture (stainless steel) in root canal

Locate the root canal orifice



E12D

Diamond-coated ball head
Locate root canal orifice with security, accuracy and efficiency



The choice of millions of dentists worldwide



Guilin Woodpecker Medical Instrument Co., Ltd.
Information Industrial Park, Guilin National High-Tech
Zone, Guilin, Guangxi, 541004 P. R. China

Tel:

Europe Sales Dept.: +86-773-5873196, +86-773-2125222

North America, South America &

Oceania Sales Dept.: +86-773-5873198, +86-773-2125123

Asia & Africa Sales Dept.: +86-773-5855350, +86-773-2125896

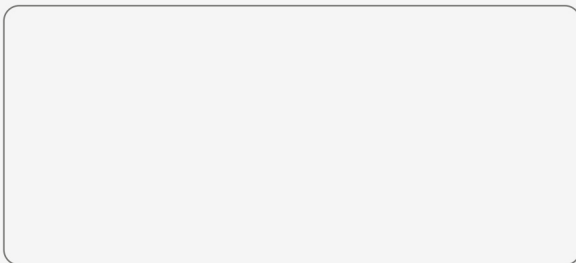
Fax: +86-773-5822450

E-mail: woodpecker@glwoodpecker.com, sales@glwoodpecker.com

Website: <http://www.glwoodpecker.com>

ZMN/WI-10-087

DISTRIBUTED BY,



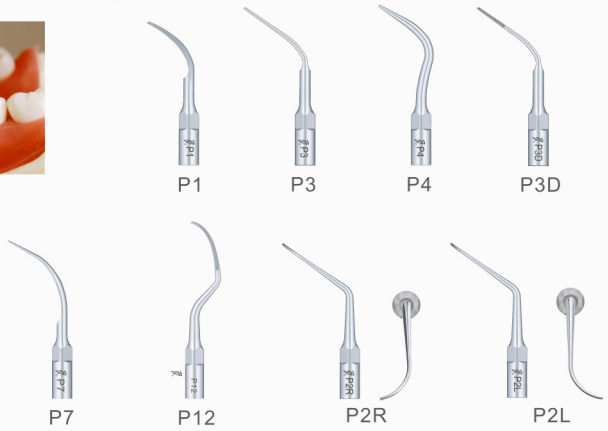
Supragingival scaling



Implant maintenance



Subgingival scaling



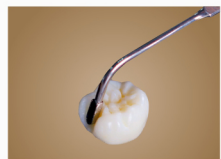
Cavity preparation



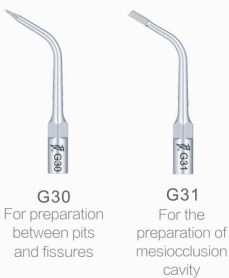
G30, For preparation between pits and fissures



G31, For the preparation of mesiocclusion cavity



G32, For the preparation of distal cavity



G30
For preparation between pits and fissures

G31
For the preparation of mesiocclusion cavity



G32
For the preparation of distal cavity

SB1
For preparation in occlusal surface and cervix dents



SB2
For the preparation of mesial surface

SB3
For the preparation of distal surface